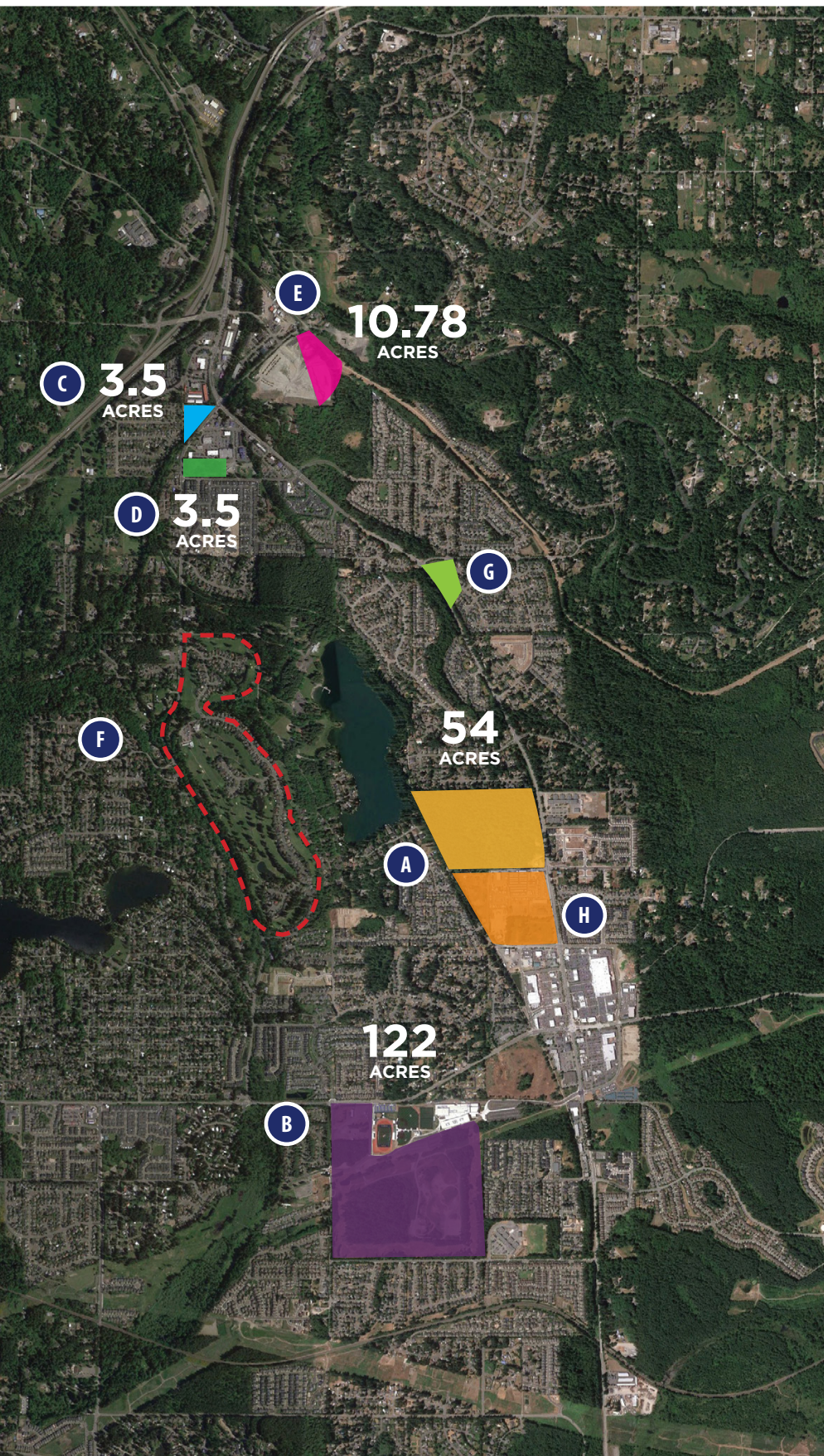


OPPORTUNITY SITES



These sites are either publicly or privately-owned. **Maple Valley has approximately 220 acres of employment land available within the city limits. The land is broken down as follows:**

- A 54 acres**
City of Maple Valley - (425) 413-6641
This parcel is in the middle of town and is owned by the City of Maple Valley. Legacy Site (LEG)
- B 122 acres**
King County Parcel - (206) 477-9350
(located near the new Tahoma High School). Zoned: Regional Learning Technology Center (RLTC)
- C 3.5 acres**
Privately-owned property. Parcel owned by Sherrell Development. These parcels are adjacent to each other. Zoned: Community Business (CB)
- D 3.5 acres**
Privately-owned property. Parcel owned by Flynn Development. These parcels are adjacent to each other. Zoned: Community Business (CB)
- E 10.78 acres**
Industrial Site
(253) 722-1400 or (206) 248-7300
Parcel owned by J.R. Hayes & Sons Inc. Filler-finish site zoned Industrial with great Hwy 18 access.
- F Lake Wilderness Golf Course**
City of Maple Valley - (425) 413- 6663
(18-hole public golf course needing additional amenities to generate more revenue). Zoned: Parks, Recreation, and Open Space (PRO) Amenity Development Opportunity
- G 7 acres**
Privately-owned Brandt Property.
Zoned: Community Business (CB)
- H Downtown**
City of Maple Valley - (425) 413-6641
This parcel is in the middle of town and is owned by various private entities. Please call the City of Maple Valley for further information.